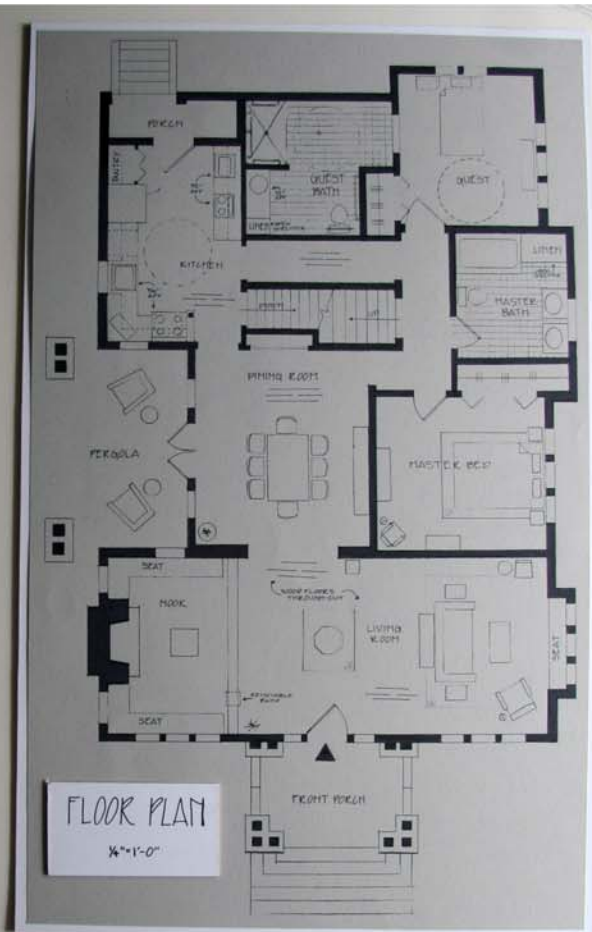


THE ARTS & CRAFTS STYLE BUNGALOW WAS PURCHASED BY A MIDDLE AGED PAINTER & HIS WIFE BECAUSE HIS WIFE WHEEL CHAIR BOUND MOTHER VISITS FREQUENTLY. THE HOUSE (1910) WILL BE RENOVATED FOR ACCESSIBILITY WHILE RESTORING IT TO ITS ORIGINAL STYLE TO RETAIN THE HISTORICAL BEAUTY OF THE HOUSE. THE SOUTH PORCH WAS NOT ALTERED INCLUDING THE FRONT SECTION OF THE HOUSE. THE KITCHEN WAS EXTENDED & INCLUDES THE ADDITION OF AN ACCESSIBLE WORK STATION. A SECOND HALLWAY WAS ADDED FOR EASIER ACCESS AS WELL AS A SECOND BATH WITH ROLL IN SHOWER. EVEN WITH THE UNIVERSAL DESIGN CHANGES, THE STYLE OF ARTS & CRAFTS WAS STILL PRESERVED.



KITCHEN 1/4"=1'-0"

BUNGALOW RENOVATION

